

Get In =
3.3m wide
& 3.9m high

Scene Dock

THEATRE EFFECTIVE
SCENE LINE
Floor crease in 5
removable panels 3 large 3
small

Floor crease in 7
removable panels

Floor crease in 11
removable panels 7 large 4
small

depth of 2m x 2.80m

A

B

C

D

E

F

G

H

J

K

L

M

EXIT

J

K

L

N

EXIT

J

K

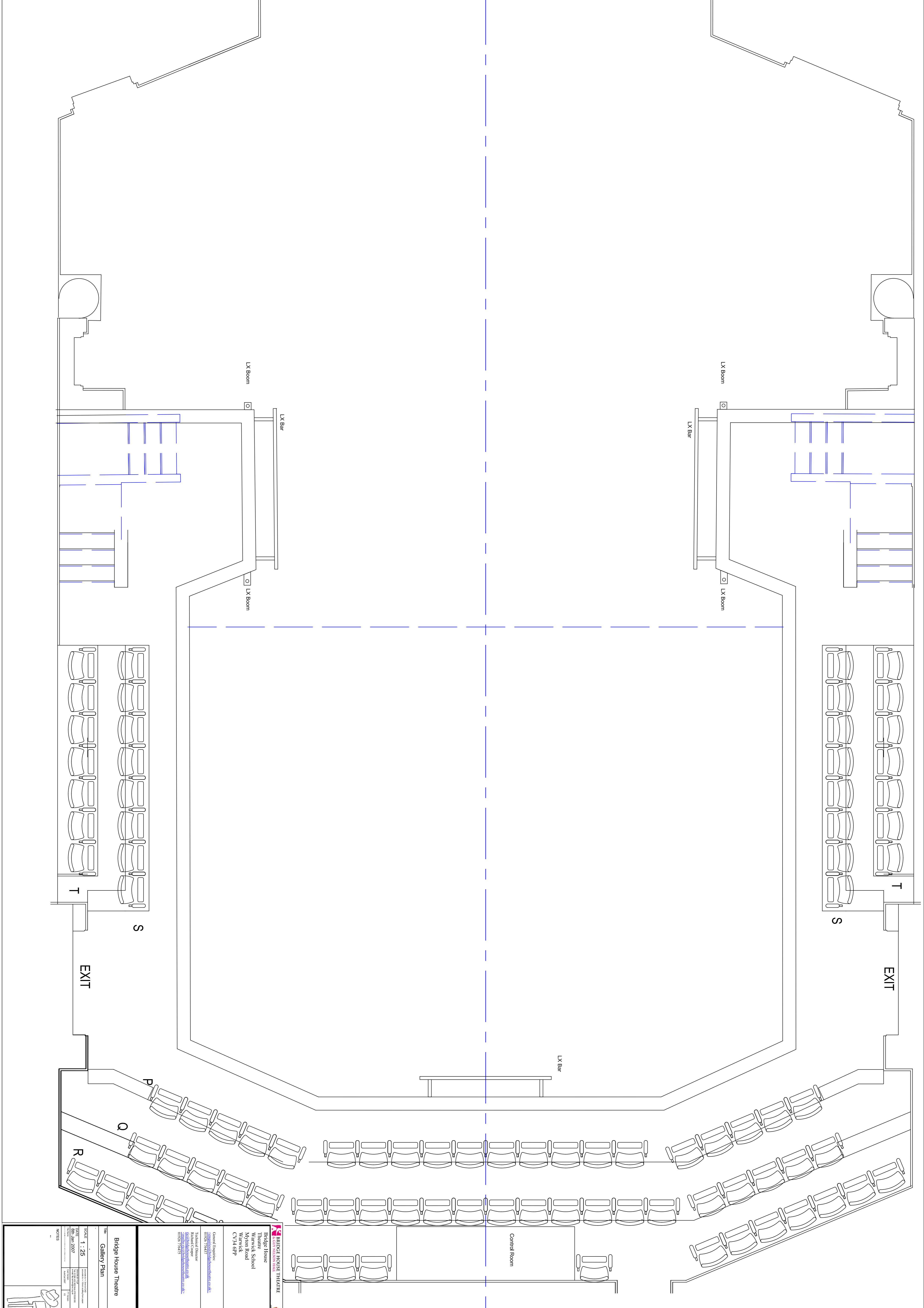
L

BRIDGE HOUSE THEATRE
 Bridge House
 Warwick School
 Warwick Road
 CV34 4EP

Contract Reference: <https://www.bridgehousetheatre.co.uk>
 Project Reference: <https://www.bridgehousetheatre.co.uk>
 Project Location: <https://www.bridgehousetheatre.co.uk>
 Project Start: <https://www.bridgehousetheatre.co.uk>
 Project End: <https://www.bridgehousetheatre.co.uk>

Scale: 1:25
 Date: 20th June 2022
 Version: 1.0

Bridge House Theatre
 Seating Plan



BRIDGE HOUSE THEATRE
 BRIDGE HOUSE THEATRE

Bridge House
 Theatre & School
 Myton Road
 Warwick
 CV34 6PP

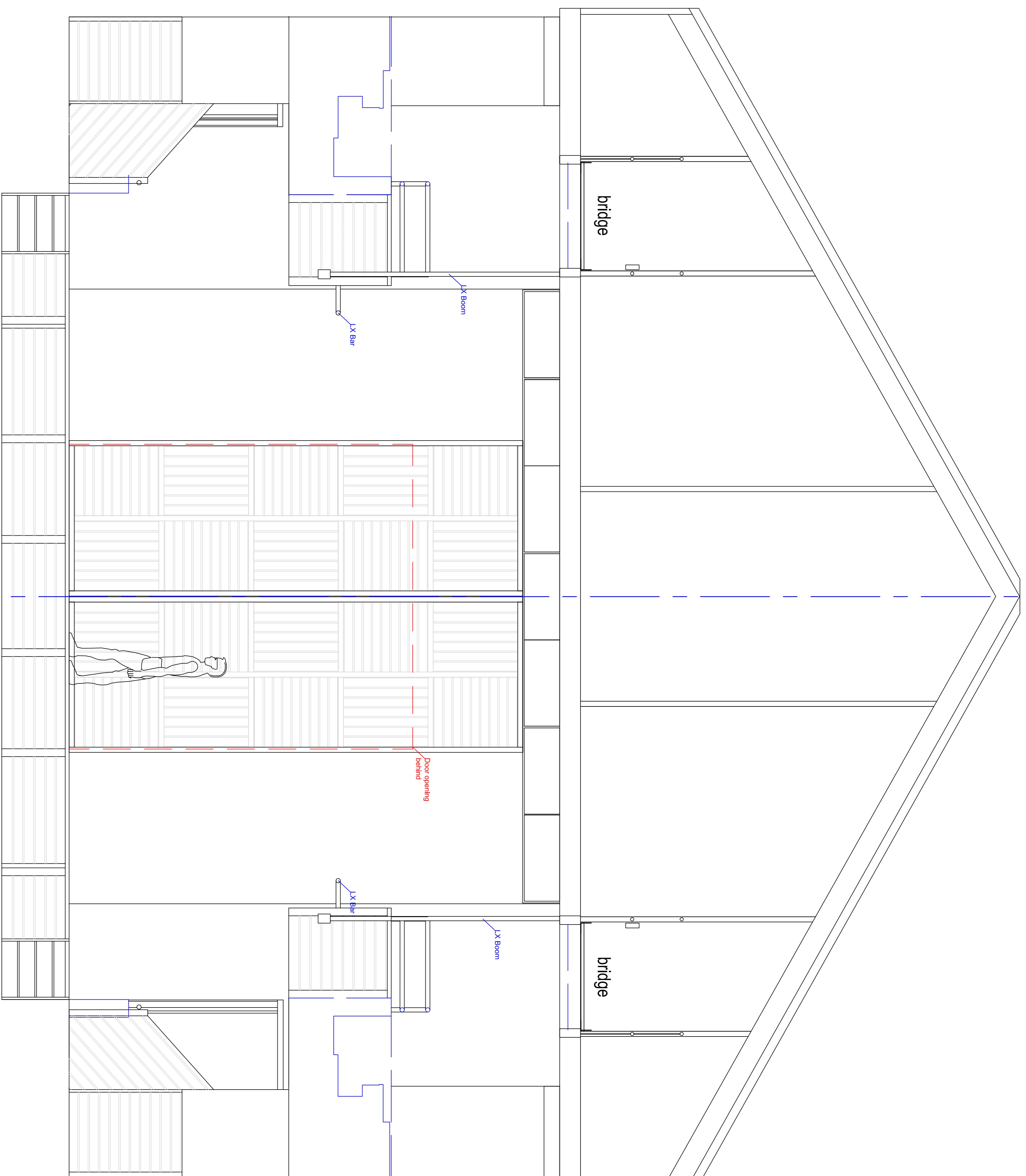
General Enquiries:
 01925 774437 info@bridgehousetheatre.co.uk
 Technical Enquiries:
 01925 774437 technical@bridgehousetheatre.co.uk
 01925 774425 boxoffice@bridgehousetheatre.co.uk

Bridge House Theatre
 Gallery Plan

Scale 1 : 25
 DATE 28/03/2017
 DRAWN BY [Name]
 CHECKED BY [Name]
 APPROVED BY [Name]

NOTES





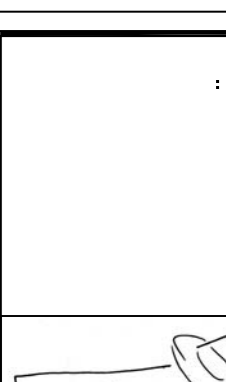
BRIDGE HOUSE THEATRE
CONTEMPORARY THEATRE

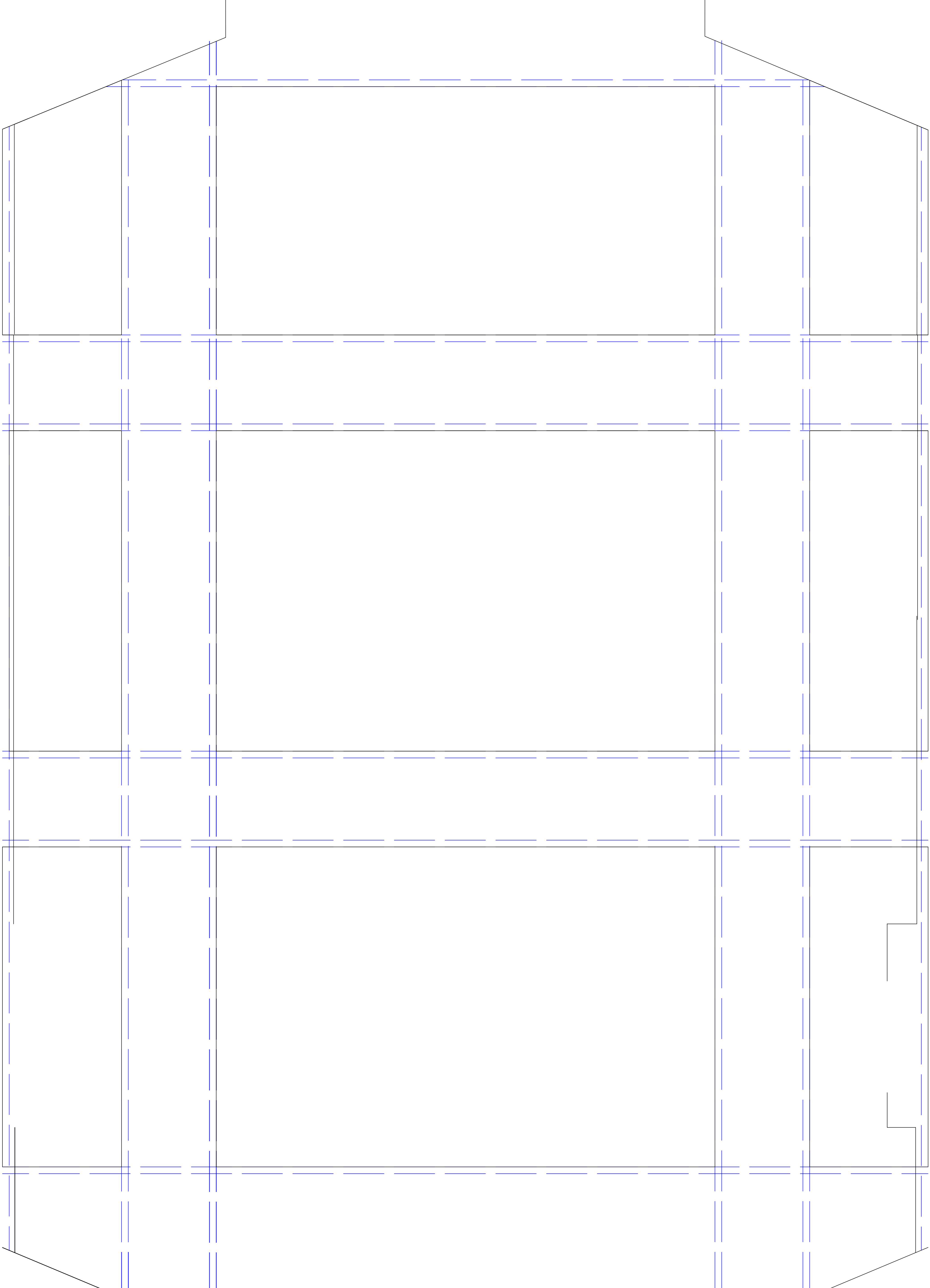
Bridge House
 Theatre
 Warwick School
 Warwick
 CV34 6PP

General Enquiries:
 01926 79473 info@bridgehouse.co.uk
 Richard Cooper
richard.cooper@bridgehouse.co.uk
 01926 79475

Bridge House Theatre
 Title Front Elevation

SCALE 1 : 25
 DATE 12/01/2022
 DRAWN BY [Name]
 CHECKED BY [Name]





BRIDGE HOUSE THEATRE
BRIDGE HOUSE
WARRICK SCHOOL
MYSON ROAD
WARRICK
CV34 6PP

General Enquiries:
enquiries@bridgehouse.co.uk
01203 776437

Technical Enquiries:
technical@bridgehouse.co.uk
www.bridgehouse.co.uk
01203 776437

Bridge House Theatre
Grid Plan

Scale: 1 : 25
Date: 28th Jan 2007

NOTES
P2

